

SHORT TERM IT JOB TRENDS	Connecticut	●
	Massachusetts	●
	New York Metro	◆
	National	◆

The IT job market in Connecticut improved again last month. Employers increased their job openings by 5.7% in August as compared to July. While this is good news the recent improvements may not last. There are signs that the overall job market may weaken in the fall which we expect to have a negative impact on IT job opportunities as well. This means that the rollercoaster job market ride is likely to continue.

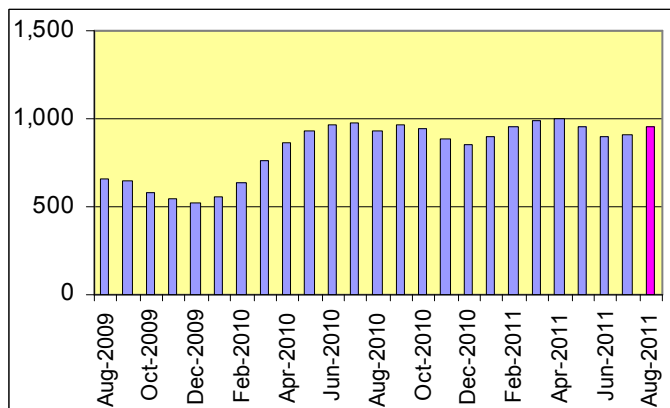
Like last month, job openings in the sectors Healthcare, Financial Services, IT Services and Hi Tech increased. A few opportunities were lost in the Insurance sector.

Table 1: IT Job Openings, Connecticut*

Aug 11	Jul 11	Jun 11	Aug 10	Aug 09
930	880	860	930	720

Other job markets in the area showed either no or negative growth. In Massachusetts IT labor demand remained flat (down 0.4%). In the New York metro area the number of IT job openings accelerated to decline (down 5.7%) compared to July. The national average lost 2.2%.

Fig.1: IT Open Positions, Connecticut*



Demand increased for IT Architects/Consultants (up 17.6%) and IT Management (up 14.3%).

*) Estimated monthly averages are based on actual count of job openings.

Table 2: IT Job Opening Estimates by Category*

	Aug 11	Aug 10
Total IT Job Market	930	930
IT Management	240	210
IT Architects/Consultants	200	170
Systems Eng./Support	170	200
Software Development	160	200
Systems Administration	60	30
Business/Process Design	50	50
IT Sales and Marketing	30	50
Training/Tech Writing	10	10
Misc.IT Job Categories	30	10

Table 3: Top 15 Needed Skills (Job Openings*)

	Aug 11	Aug 10
Business Analysis	210	260
SQL	200	200
Oracle DBMS	190	170
Large system technologies	160	150
Java	150	200
C++/VC++	110	100
Unix	110	110
XML	110	70
Windows OS	110	130
Mainframe	100	60
Microsoft SQL Server	100	80
Offshore team coordination	100	90
DB2 (IBM)	80	60
Linux	80	120
Web Services	80	70



CT Technology Council
222 Pitkin St., Suite 113 East Hartford, CT 06108
phone: (860) 289 - 0878
web: <http://www.ct.org>

METHODOLOGY

SkillPROOF surveys the inventories of job openings at large, regional and nationwide direct employers. Job openings are counted and verified every 24 hours. All data sources have been verified for timely removal of filled or closed positions. No data from job boards or search firms are included.

For this report SkillPROOF estimates the counts of job openings. Estimates are calculated directly from SkillPROOF's actual daily counts of job openings. As a base for its calculations, SkillPROOF uses data and findings from reports of the Bureau of Labor Statistics (BLS) <http://www.bls.gov>.



SkillPROOF Inc.
510 Barnum Ave, Suite 402 • Bridgeport, CT 06608
phone: (917) 463 - 3941 • fax: (815) 642-8694
web: <http://www.skillproof.com>