

<b>SHORT TERM IT JOB TRENDS</b>	<b>Connecticut</b> <span style="color: green;">▲</span>
	<b>Massachusetts</b> <span style="color: green;">▲</span>
	<b>New York Metro</b> <span style="color: green;">▲</span>
	<b>National</b> <span style="color: green;">▲</span>

The IT job market in Connecticut continues to disappoint. Despite the hope for an economic recovery employers did not look for more staff in August. The average number of

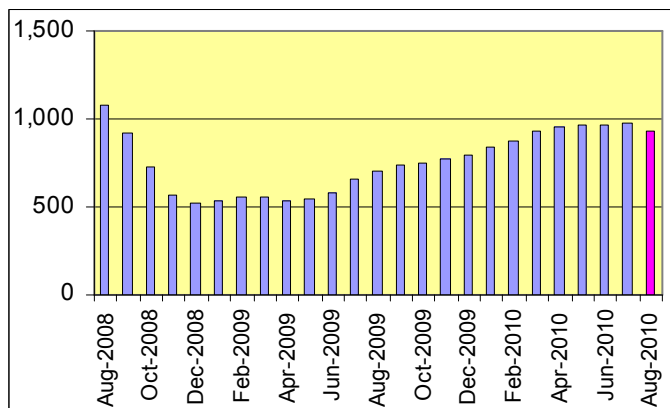
daily IT job postings in the state dropped 4.1% leaving IT professionals with 940 openings to choose from. Our indicators show that a majority of employers post more jobs suggesting a positive short term outlook. Still, in order to make a difference in the current market, there has to be a substantial number of new job postings to make an impact in hiring.

**Table 1: IT Job Openings, Connecticut\***

Aug 10	Jul 10	Jun 10	Aug 09	Aug 08
940	980	970	730	1080

Other IT job markets in the area nudged upwards. In Massachusetts employers posted 6.0% more jobs than in July. The posting volume in the New York Metro area increased only 2.5%. Nationwide IT job seekers found on average 3.3% more job opportunities.

**Fig.1: IT Open Positions, Connecticut\***



Demand for all major IT occupations declined in Connecticut. Only job postings for IT Architects / Consultants increased 6.3%.

**Table 2: IT Job Opening Estimates by Category\***

	Aug 10	Aug 09
Total IT Job Market	940	730
IT Management	210	130
Software Development	200	200
Systems Eng./Support	200	160
IT Architects/Consultants	170	120
IT Sales and Marketing	50	20
Business/Process Design	50	30
Systems Administration	30	50
Training/Tech Writing	10	0
Hardware Engineering	0	10
Misc.IT Job Categories	10	10

**Table 3: Top 15 Needed Skills (Job Openings\*)**

	Aug 10	Aug 09
Business Analysis	260	160
Java	200	190
SQL	200	190
Oracle DBMS	170	130
Large system technologies	150	140
Windows OS	130	110
Linux	120	100
Unix	110	170
C++/VC++	100	140
Offshore team coordination	90	20
Microsoft SQL Server	80	60
C#	70	100
XML	70	90
Web Services	70	50
DB2 (IBM)	60	80

\*) Estimated monthly averages are based on actual count of job openings. Technology skill estimates have been revised.

**METHODOLOGY**

SkillPROOF surveys the inventories of job openings at large, regional and nationwide direct employers. Job openings are counted and verified every 24 hours. All data sources have been verified for timely removal of filled or closed positions. No data from job boards or search firms are included.

For this report SkillPROOF estimates the counts of job openings. Estimates are calculated directly from SkillPROOF's actual daily counts of job openings. As a base for its calculations, SkillPROOF uses data and findings from reports of the Bureau of Labor Statistics (BLS) <http://www.bls.gov>.



**CT Technology Council**  
222 Pitkin St., Suite 113 East Hartford, CT 06108  
phone: (860) 289 - 0878  
web: <http://www.ct.org>



**SkillPROOF Inc.**  
510 Barnum Ave, Suite 402 • Bridgeport, CT 06608  
phone: (917) 463 - 3941 • fax: (815) 642-8694  
web: <http://www.skillproof.com>