

SHORT TERM IT JOB TRENDS	Connecticut	↓
	Massachusetts	○
	New York Metro	○
	National	↓

The job market for IT specialists in Connecticut continues to deteriorate. While in August the situation seemed to improve a bit, in September employers were less confident about their need for more staff. This has been a trend since May and we expect the IT job market to soften further. Nevertheless, IT occupations remain higher in demand than many others because they enable employers to improve their business processes.

Industries with less demand in September include Banking as well as Insurance and Pharmaceutical. All others kept their job inventories steady.

Table 1: IT Job Openings, Connecticut*

Sep 11	Aug 11	Jul 11	Sep 10	Sep 09
850	940	880	980	600

In Massachusetts IT job opportunities are in slow decline since May (down 1.4% in September). Job seekers there enjoyed a much stronger recovery last year than their counterparts in Connecticut.

In the New York Metro area IT job openings declined significantly in September (down 14.6%), the biggest one month loss since January 2009. The national average lost another 2.4% in September.

Fig.1: IT Open Positions, Connecticut*

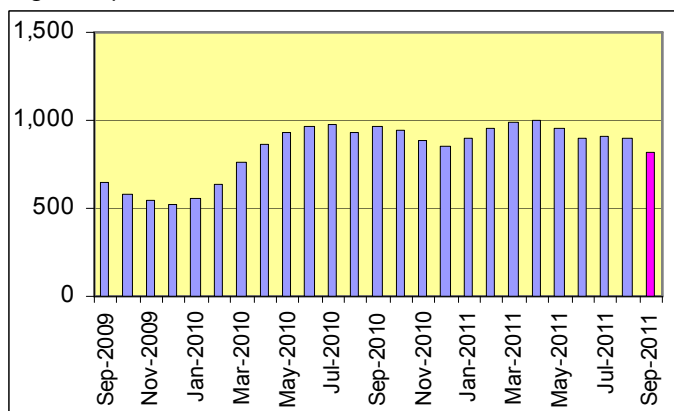


Table 2: IT Job Opening Estimates by Category*

	Sep 11	Sep 10
Total IT Job Market	850	980
IT Management	230	260
IT Architects/Consultants	200	150
Systems Eng./Support	150	200
Software Development	110	210
Systems Administration	50	30
Business/Process Design	50	50
IT Sales and Marketing	30	60
Training/Tech Writing	10	10
Misc.IT Job Categories	20	20

Table 3: Top 15 Needed Skills (Job Openings*)

	Sep 11	Sep 10
Business Analysis	200	240
Large system technologies	190	150
SQL	190	220
Oracle DBMS	180	170
Java	120	200
Microsoft SQL Server	110	80
Mainframe	110	60
Windows OS	110	140
Unix	100	140
XML	100	90
C++/VC++	90	110
Offshore team coordination	90	100
DB2 (IBM)	80	50
Web Services	80	80
Linux	70	120



CT Technology Council
222 Pitkin St., Suite 113 East Hartford, CT 06108
phone: (860) 289-0878
web: <http://www.ct.org>

*) Estimated monthly averages are based on actual count of job openings.

METHODOLOGY

SkillPROOF surveys the inventories of job openings at large, regional and nationwide direct employers. Job openings are counted and verified every 24 hours. All data sources have been verified for timely removal of filled or closed positions. No data from job boards or search firms are included.

For this report SkillPROOF estimates the counts of job openings. Estimates are calculated directly from SkillPROOF's actual daily counts of job openings. As a base for its calculations, SkillPROOF uses data and findings from reports of the Bureau of Labor Statistics (BLS) <http://www.bls.gov>.

SkillPROOF Inc.
510 Barnum Ave, Suite 402 Bridgeport, CT 06608
phone: (917) 463-3941 fax: (815) 642-8694
web: <http://www.skillproof.com>