

<b>SHORT TERM IT JOB TRENDS</b>	<b>Connecticut</b>
	<b>Massachusetts</b>
	<b>New York Metro</b>
	<b>National</b>

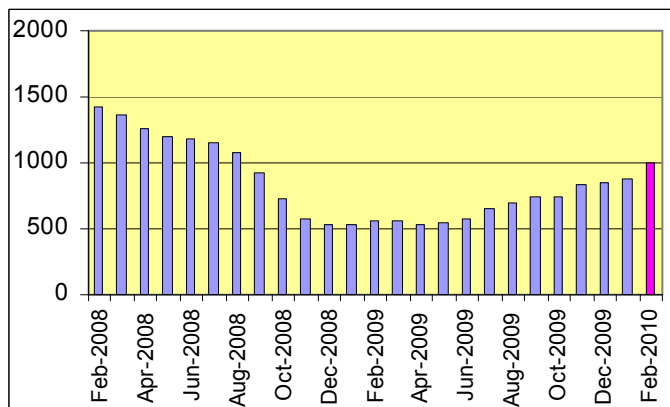
The IT job market in Connecticut and nationwide is improving! Demand jumped 28.2% in February as employers piled on new job openings in expectation of an improving economy. While this is good news questions remain how many posted openings will get filled or whether this is a peek at available talent in the land. Industries driving the increased demand in Connecticut are Financial Services and Healthcare. Other industries are still holding back.

**Table 1: IT Job Openings, Connecticut\***

Feb 10	Jan 10	Dec 09	Feb 09	Feb 08
1,000	790	810	530	1460

The New York Metro area benefits from the increasing number of job openings in Financial Services. In this job market demand for IT professionals grew significantly showing 14.5% more posted opportunities than in January. At the same time the decline of the job market in Massachusetts slowed to 3.2%. We expect improvements for March and beyond. In February, the national IT job market grew 8.6%, recovering more that it had lost in January.

**Fig.1: IT Open Positions, Connecticut**



Demand for all core IT occupations increased significantly including Software Development (up 25.0%) and Systems Engineering / Support ( up 36.8%).

\* Estimated monthly averages are based on actual count of job openings.

**Table 2: IT Job Opening Estimates by Category\***

	Feb 10	Feb 09
<b>Total IT Job Market</b>	<b>1000</b>	<b>530</b>
Software Development	350	90
Systems Eng./Support	260	140
IT Management	160	100
IT Architects/Consultants	120	110
IT Sales and Marketing	30	20
Systems Administration	30	50
Business/Process Design	20	20
Hardware Engineering	10	0
Training/Tech Writing	10	0
Misc.IT Job Categories	10	10

**Table 3: Top 15 Needed Skills (Job Openings\*)**

	Feb 10	Feb 09
Java	370	80
SQL	340	150
Unix	270	100
C++/VC++	250	60
Linux	230	50
C#	220	50
Perl	200	10
Large system technologies	200	140
Windows OS	190	90
Business Analysis	190	120
XML	170	70
Sybase	160	10
Oracle DBMS	140	110
Microsoft SQL Server	140	90
DB2 (IBM)	120	90



**CT Technology Council**  
222 Pitkin St., Suite 113 East Hartford, CT 06108  
phone: (860) 289 - 0878  
web: <http://www.ct.org>

**METHODOLOGY**

SkillPROOF surveys the inventories of job openings at large, regional and nationwide direct employers. Job openings are counted and verified every 24 hours. All data sources have been verified for timely removal of filled or closed positions. No data from job boards or search firms are included.

For this report SkillPROOF estimates the counts of job openings. Estimates are calculated directly from SkillPROOF's actual daily counts of job openings. As a base for its calculations, SkillPROOF uses data and findings from reports of the Bureau of Labor Statistics (BLS) <http://www.bls.gov>.



**SkillPROOF Inc.**  
510 Barnum Ave, Suite 402 • Bridgeport, CT 06608  
phone: (917) 463 - 3941 • fax: (815) 642-8694  
web: <http://www.skillproof.com>