

<b>SHORT TERM IT JOB TRENDS</b>	<b>Connecticut</b>	●
	<b>Massachusetts</b>	●
	<b>New York Metro</b>	●
	<b>National</b>	●

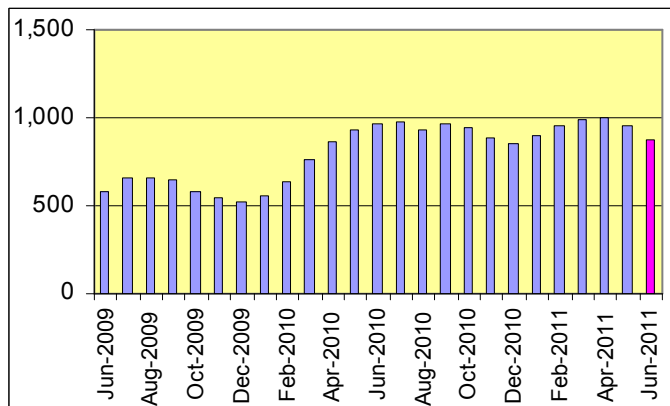
This recovery is a bumpy ride. After a good start earlier this year, the IT job market in Connecticut is back in decline. Employers posted 7.5% fewer job openings in June than in May. This is the second month of loss in a row even before we get into the traditionally slower summer season. What is most worrisome is the size of decline we are seeing. While demand during the summer months typically is flat, this year we seem to fall into a hole. Our indicators show that demand may stabilize yet there is no optimism currently for more job market activity.

**Table 1: IT Job Openings, Connecticut\***

Jun 11	May 11	Apr 11	Jun 10	Jun 09
860	930	1020	960	590

IT labor demand in other regions in the North East is flat. There is virtually no movement either way. In Massachusetts IT job postings increased 0.6% and in the New York Metro area demand declined 0.9%. These numbers indicate that the job markets have settled in for the season and are unlikely to move before fall. The national average remained virtually unchanged, too (up 0.5%).

**Fig.1: IT Open Positions, Connecticut\***



Job opportunities for IT Management had the highest losses in May declining 20%.

\*) Estimated monthly averages are based on actual count of job openings.

**Table 2: IT Job Opening Estimates by Category\***

	Jun 11	Jun 10
Total IT Job Market	860	960
IT Management	200	250
Systems Eng./Support	170	210
Software Development	150	210
IT Architects/Consultants	150	160
Systems Administration	70	40
Business/Process Design	50	30
IT Sales and Marketing	30	50
Training/Tech Writing	10	0
Misc.IT Job Categories	30	10

**Table 3: Top 15 Needed Skills (Job Openings\*)**

	Jun 11	Jun 10
Business Analysis	200	220
SQL	170	210
Oracle DBMS	160	170
Large system technologies	160	120
Java	140	200
Windows OS	130	110
Microsoft SQL Server	120	80
Offshore team coordination	90	80
Mainframe	90	60
C++/VC++	80	130
Unix	80	110
XML	80	70
Web Services	70	60
DB2 (IBM)	70	60
Linux	70	90



CT Technology Council  
222 Pitkin St., Suite 113 East Hartford, CT 06108  
phone: (860) 289 - 0878  
web: <http://www.ct.org>

**METHODOLOGY**

SkillPROOF surveys the inventories of job openings at large, regional and nationwide direct employers. Job openings are counted and verified every 24 hours. All data sources have been verified for timely removal of filled or closed positions. No data from job boards or search firms are included.

For this report SkillPROOF estimates the counts of job openings. Estimates are calculated directly from SkillPROOF's actual daily counts of job openings. As a base for its calculations, SkillPROOF uses data and findings from reports of the Bureau of Labor Statistics (BLS) <http://www.bls.gov>.



**SkillPROOF Inc.**  
510 Barnum Ave, Suite 402 • Bridgeport, CT 06608  
phone: (917) 463 - 3941 • fax: (815) 642-8694  
web: <http://www.skillproof.com>